

ORGANIZATION OF THE DEPARTMENT OF THE TREASURY

December 1, 1960

XVI

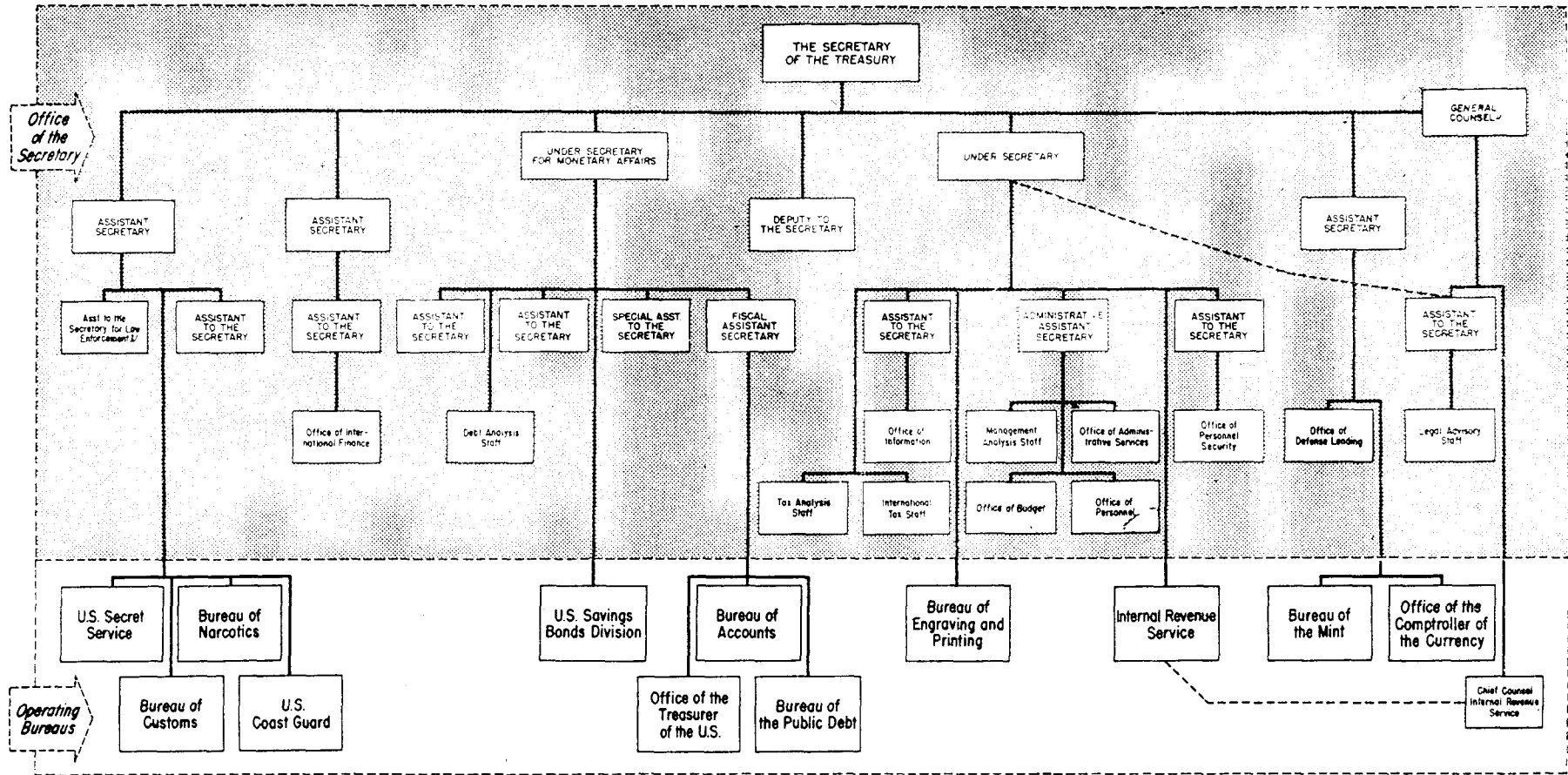


CHART 1

¹ The General Counsel serves as legal advisor to the Secretary, his associates, and heads of bureaus.
² The Assistant to the Secretary for Law Enforcement coordinates enforcement activities of the U.S. Secret Service, U.S. Coast Guard, Bureau of Customs, Bureau of Narcotics, and Internal Revenue Service.

5
 Rec I
 195
 as :
 dar
 lev
 of
 fyi
 del
 wa
 su
 Fe